

# Summer Journey into Nature & Culture

## Club Med Lijiang

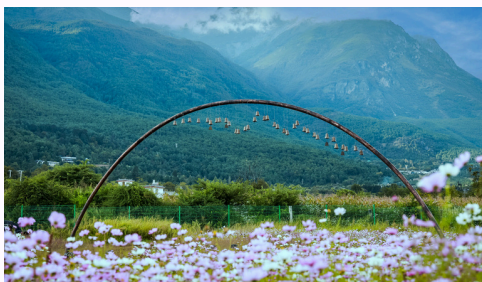


up to  
**42% off**  
HK\$845 up  
per person  
per night

**Stay Period: 01 Jun – 31 Oct 2026**  
**Minimum Stay: 3 Nights**

### The best reasons to go

- **Gateway to Jade Dragon - You are here**  
With stunning views of Jade Dragon Snow Mountain and award-winning design, our Resort is ideal to explore Yunnan's beauty.



- **Naxi heritage - Local immersion**  
Feel the vibrant Naxi culture come alive through the design, activities and authentic cuisine offered in the Resort.



- **Thrilling Waterland - Family fun**  
Make a splash at the 1,500 sqm indoor waterland. Featuring colorful slides, 2 pools and a deck with stunning mountain views.



- **Ancient City Charm - Discovery**  
Travel back in time as you explore charming Baisha ancient town, a UNESCO World Heritage Site steps away from the Resort.



## All-inclusive holiday price

✓ **Full board with drinks included**

All your meals are included in your stay: breakfast, lunch, snack and dinner. Club Med offers a full board of quality buffets flavors of the world and specialty restaurants with table service.

✓ **Open bar and all day snacks**

You have access to a bar and snack service all day. A little hollow, a need to refresh or warm up... the bar meets all your desires.

✓ **Day and night entertainment**

It's all included, so all you have to do is come and enjoy the fun! Gourmet Cuisine Bar & Snacking, Sports & Activities and Day & night entertainment

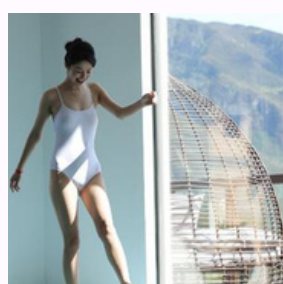
✓ **Wifi Full-board.**

## Accommodation

Room type	Min (m2)	Capacity	Highlights
Superior Room – Ground floor	40	1-3	--
Interconnecting Superior Room – Ground floor	80	2-6	--
Deluxe Room	40	1-3	Lounge area
Deluxe Room – with View	40	1-3	View, Lounge area, Furnished balcony or terrace
Deluxe Room – Mobility Accessible	40	1-3	Lounge area, Furnished balcony or terrace
Family Deluxe Room	65	1-5	Children's Separate Room, Lounge area, Furnished balcony or terrace
Interconnecting Deluxe Rooms	80	4-6	Lounge area, Furnished balcony or terrace
Interconnecting Deluxe Rooms – with View	80	4-6	View, Lounge area, Furnished balcony or terrace

## Vibrant Activities & Sports

- Yoga
- Climbing
- Trapeze
- Team Sports
- Tennis
- Hiking
- Archery
- Pickleball
- Bocce Ball
- Badminton
- Entertainment
- Swimming pools
- Fitness
- Mahjong
- Cardo training
- Karaoke



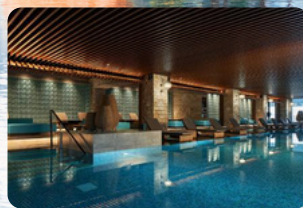
Children's Services (0 to 10 years)  
 Children's Clubs (2 to 17 years)  
 Children's Activities (2 to 17 years)

**Excursions (at cost)**

- Nature getaways\*
- Connecting with culture\*

## Restaurant & Bars

- **Baisha Restaurant** - Main Restaurant  
International, Chinese, Healthy & Vegetarian options
- **Square** - Gourmet Lounge  
Chinese, Healthy & Vegetarian options
- **Shuhe** - Snack restaurant  
Barbecue
- **Dayan bar** - Main bar  
Hand-crafted cocktails, wines, spirits, and beers, Mocktails, refreshments, and alcohol-free beers, Coffee and Tea selection, Festive appetizers & live entertainment
- **Blue Moon Bar** - Outdoor Bar  
Hand-crafted cocktails, premium alcohols, Mocktails, refreshments, and alcohol-free beers, Festive appetizers



### Transportation Information

#### Resort Address:

Club Med Lijiang, No. 200, Group 1 Xinshan Village, Baisha Town, Yulong County, Lijiang, Yunnan Province, CHINA

#### Nearest arrival points

Lijiang Sanyi International Airport (55 mins) Lijiang railway station (40 mins)

Package Code: P260511LJG | Click [HERE](#) for full terms and conditions.

For reservations or inquiries, please contact us at [leisure@connexustravel.com](mailto:leisure@connexustravel.com)

[www.connexustravel.com](http://www.connexustravel.com)

Connexus Travel Limited | Licence No. 350001



SCAN TO  
 CONTACT US  
 ON WECHAT



CONTACT US  
 ON WHATSAPP  
 +852 9765 1238

Stay Connected, Spend Less- Get 5% Off Holafly eSIM!

**BUY NOW**